



Stoneacre
Properties



Birchfields Close, Leeds, LS14 2JE
Offers Over £230,000

Stoneacre Properties are delighted to offer for sale this detached bungalow that is situated in a cul-de-sac location. The property is well presented and boasts ample parking and a garage. Comprising: kitchen, lounge, two bedrooms one currently used as a dining area, conservatory and shower room. Externally this lovely home has ample off street parking that leads to a garage and lovely gardens both to the front and rear. Early viewings are highly recommended.

Kitchen



Fitted with a large range of wall and base units with work surfaces over incorporating a sink and drainer unit. Electric oven and gas hob. Built in storage cupboard. Two double glazed windows. External door.

Inner Hall

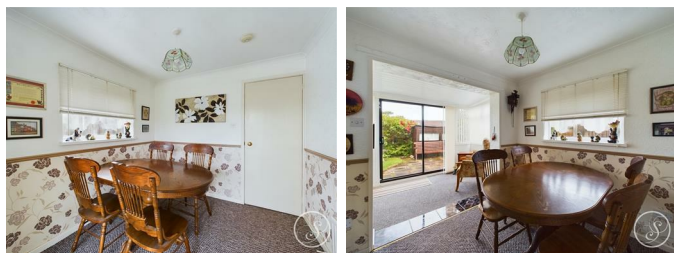
Built in storage cupboard. Access into loft.

Lounge



Double glazed window. Central heating radiator.

Dining Room/Bedroom Two



Open plan into conservatory. Double glazed windows. Central heating radiator.

Conservatory



Sliding patio leading into the rear garden.

Bedroom One



Fitted with a range of wardrobes and storage. Central heating radiator. Double glazed window.

Shower Room



Fitted with a shower cubicle, vanity wash hand basin and wc. In addition there is tiling, central heating radiator and a double glazed window.

External



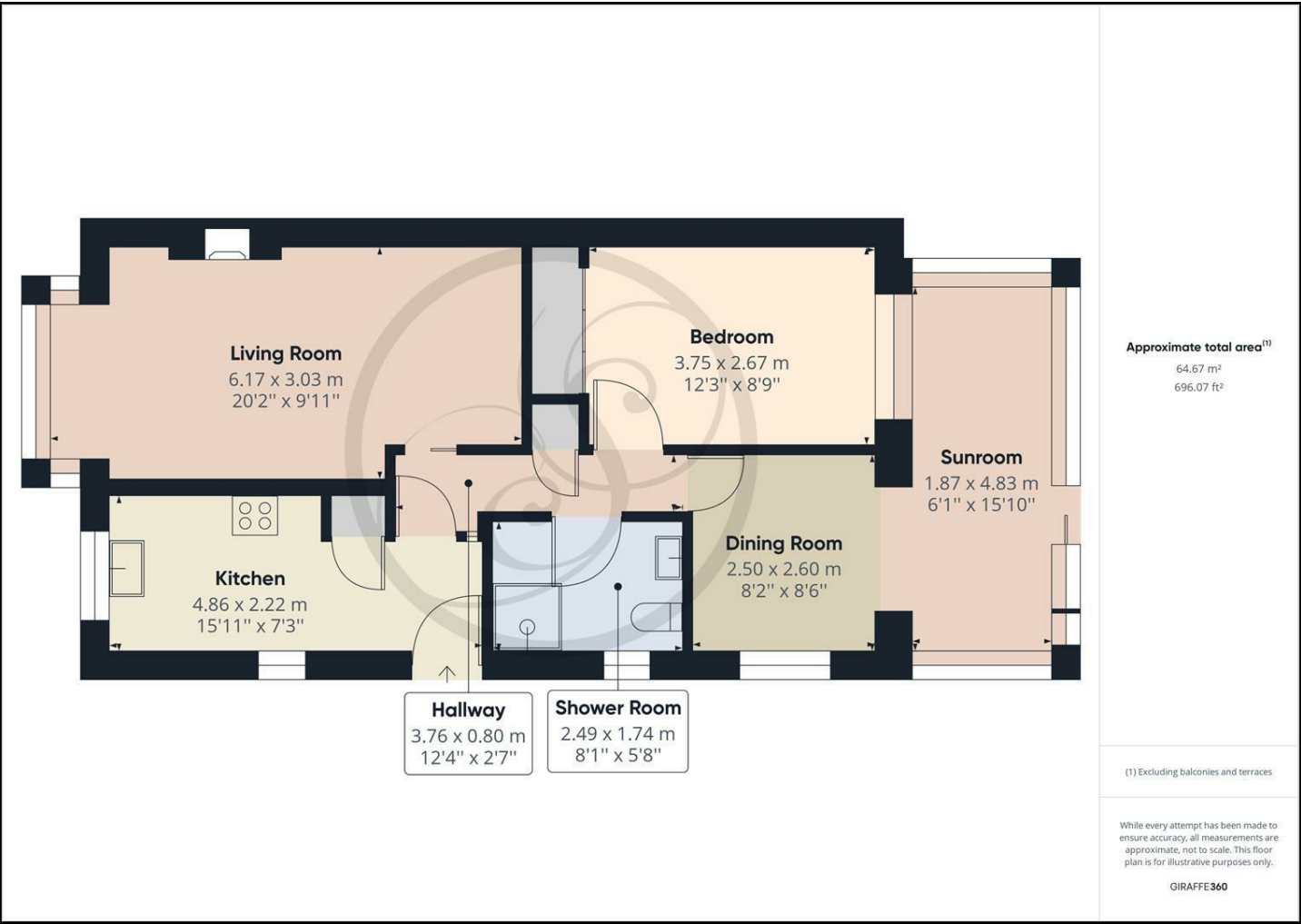
To the front and rear this property has well maintained garden. There is also ample off street parking that leads to a garage.

Garage



Up and over door.

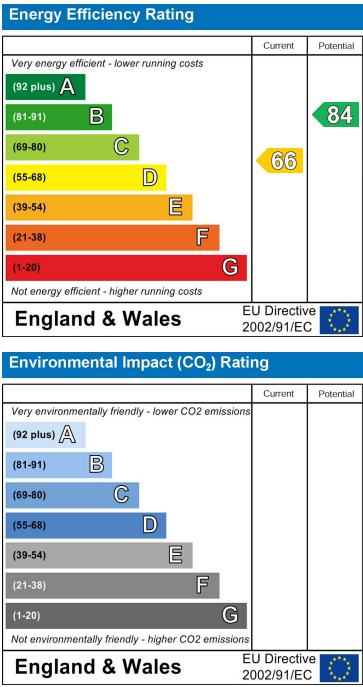
Floor Plan



Area Map



Energy Efficiency Graph



These particulars, whilst believed to be accurate are set out as a general outline only for guidance and do not constitute any part of an offer or contract. Intending purchasers should not rely on them as statements of representation of fact, but must satisfy themselves by inspection or otherwise as to their accuracy. No person in this firm's employment has the authority to make or give any representation or warranty in respect of the property.

